



www.GPHistorical.com

Grand Prairie Historical Organization

Volume XXXVII

November 2011

MEETING LOCATION

For our next meeting November 17th, we will be taking a tour of Historic Grapevine from 11:30am—2pm. We will leave from the GP Museum (1516 W. Main St., GP, 75050) at 11am, or you can meet us in Grapevine where we start a tour at 11:30 and then have lunch.

Please RSVP to Angela Giessner (972-262-5151) no later than November 15th.

**Grand Prairie Historical Organization
Main Street and Heritage Center Tour
Thursday, November 17, 2011**

Start	End	Time	Group A (Sallie Andrews)	Group B (Pam Price)
11:30 AM -	12:00 PM	30 min	Welcome / Palace Theatre Tour Palace & Lancaster- Brief History (Rocky Gribble) (Parking: see below)	Welcome / Palace Theatre Tour Palace & Lancaster- Brief History (Rocky Gribble) (Parking: see below)
12:00 PM -	12:10 PM	10 min	Drive to Heritage Center	Drive to Heritage Center
12:10 PM -	12:40 AM	30 min	Train Depot	Museum
12:40 AM	12:45 AM	5 min	Travel Time	Travel Time
12:45 AM -	1:15 PM	5 min	Museum	Train Depot
1:15 PM -	2:00 PM	45 min	Founders Bldg-Wall Mural of Grapevine History and Lunch	Founders Bldg-Wall Mural of Grapevine History and Lunch
2:00 PM			Return to Grand Prairie	

www.GPhistorical.com

GRAPEVINE TOUR INFORMATION

Parking for this event will be at the north end of Main Street and is available on Jenkins Street behind the Torian (Log) Cabin. We will meet in the auditorium of the Palace Theatre on Main Street. When we get there we'll break into two groups and have two tour guides—Sallie Andrews and Pam Price.

Lunch is being provided by Weinbergers's Deli for \$11 and will be delivered to the Founders Building close to the end of the tour. We need your lunch order when you call to RSVP for the event. When you call your lunch order choices are:

Meat	Bread	Cheese
Turkey	White	Provolone
Ham	Wheat	American
Roast	Marble Rye	Swiss
	Onion Roll	Cheddar

If you have questions about the tour, or get lost—contact numbers are:

Brian Bingham 214-808-1913 or Pam Price 817-300-1184

Grand Prairie Historical Organization—Corporate Sponsors



Thorne and Skinner, Attorneys at Law

Eddlemon Brothers Catering

Grand Prairie Historical Organization — Life Members

Robert H Archer, Judy Armstrong, Billy Joe Armstrong, Greta Berry Beckler, Carol Bell, Grant Bell, Bebe Bingham, Brian W. Bingham, Joan Zuspahn Bronstad, Verna Brown, Lisa Chennault, Thomas Chennault*, Jo Robertson Campbell, L.R. Cannon, Pat Watson Capps, Marion Cato, Sharon Chaparas, Helen Chennault, Thomas B Chennault, City of Grand Prairie Marketing, Bill Claybourn, Joan Longorio Claybourn, Jorja Jackson Clemson, Joe W. Colwell, Kay Conelly, Marge Copeland, H. Victor Copeland*, Doranna Corley, Jerry Corley, Reggie Crump, Rochelle Crump, Bobby Donaldson, Scott Donaldson, Cheryl Friman Dover, Karen Eddlemon, Richard and Annette Edmonson, Charles and Janice England, Kirk and Marey England, Alice Stanfield Ernst, Paul Wayne Ernst, Olive Galloway, Angela Sutton Giessner, Don Goldsmith, Norma Robertson Hale, Loni Haran, Marvin J (Jack) Hays, Lee D. Herring, Thomas Hight Sr., Gary Hill, Betty Bell Hulse, Ruthe Thompson Jackson, Vera Jinks, Laurie Hulse Johnson, Blythe Kizziar, Ouida Chapman Lewis, DUANE McGuffey, Linda McNeff, Kenneth R. Miller, Lynn Motley, Betty Phillips, Laura Thompson Potter, Mickey Powell, Charles Powers, Kathy Ritterhouse, Bob Roberts, Kathy Kaderka Sherrill, Susan Shuffler, Fynlon and Eugenia Simpson, Janette Skrasek, Ouida Daugherty Smith, Amy Sprinkles, Donald Stanfield, Joyce Colwell Stanfield, Marie Kerr Stufflebeme*, Marshall Sutton, Donald Taylor*, Kenny Tyler, Paul and Madie Vernon, Sammie Ausmus Walker, Sarah Wellis, John Wright

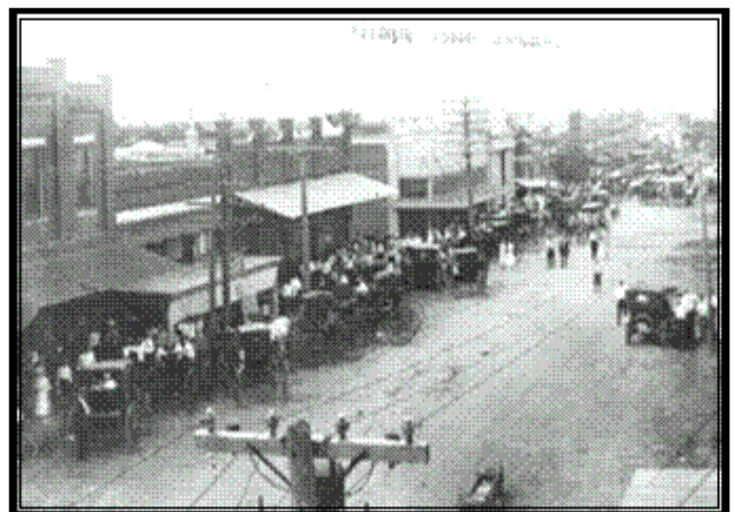
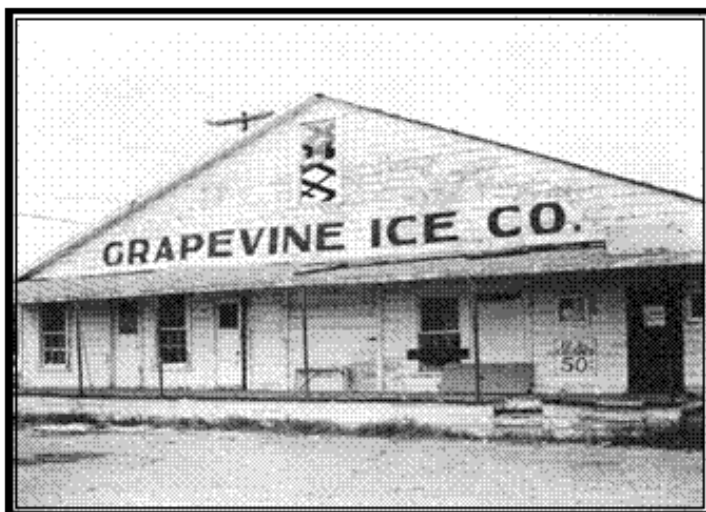
* Deceased

Grapevine, Texas

Grapevine is the oldest settlement in Tarrant County, originating under the Lone Star flag in 1844, a year before Texas became a part of the United States.

In October, 1844, General Sam Houston and fellow Republic of Texas Commissioners camped at Tah-Wah-Karro Creek, also known as Grape Vine Springs, to meet with leaders of ten Indian nations. This historic meeting culminated in the signing of a treaty of "peace, friendship and commerce," which opened the area for settlement by homesteaders and pioneers. The settlement was named Grapevine because of its location on the Grape Vine Prairie near Grape Vine Springs, both of which were named for the tart, wild Mustang grapes that blanketed the area.

"Millions of stories are gone forever, but it is not too late to capture what remains..." Mayor William D. Tate



Grapevine Historical Museum

The major purpose of the Grapevine Historical Museum (www.grapevinehistory.org) is to collect, preserve and interpret those objects, structures and documents which were used within its area of concern by the people who explored, founded, lived in, developed, or, in the case of prehistoric man, Indians, and emigrants, wandered across regularly or camped within the Grapevine Area.

The purpose of the Grapevine Historical Society shall be to promote a program for the appreciation of history and the natural and social sciences; to preserve the history of the Grapevine area and to create and maintain a permanent educational museum and allied projects; and to encourage the recording, preservation and presentation of the history of the Grapevine area.



Slate of Proposed Officers for new Term

President—Janette Skrasek

President Elect—Stephanie Moreno

Treasurer—Carol Bell

Secretary—Sammie Walker

Outgoing President: Brian W. Bingham

Programs Co-Chairs- Alice Ernest and Myrle Knox

Historian/Publicity—Kathy Ritterhouse

Corresponding Secretary Cheryl Dover

Membership Chair Laurie Johnson

**Grand Prairie Historical
Organization**

P.O. Box 532173

Grand Prairie, Texas 75053-2173

214-808-1913 or

bingham@alliance-services.com

Brian W. Bingham, President

Thank you to Amy Sprinkles and the City of Grand Prairie for our new sign on the Grand Prairie Historical Organization Building



Torian Cabin – **The oldest structure in Tarrant County** – dating from the late 1840s. It was built NW of downtown and inhabited by the Torian family until the 1940s. The logs were numbered, taken apart and moved by the Grapevine Historical Society to Liberty Park in 1976. It is a “double-pen” style cabin. The cabin has a Texas Historical Commission medallion on it in recognition of its significance.



THANKS UTAH !!!

The GPHO would like to thank Utah Rodgers for continuing to send numerous pictures for our archive. He is sending these pictures to help preserve the history of Grand Prairie.